

HOLLIE TREE

A detailed black and white illustration of a holly branch with several pointed, serrated leaves and clusters of small, round berries. The branch is positioned diagonally, partially overlapping the word 'HOLLIE'.

SILVER & SCENTS

TURNING YOUR HOME INTO
A PLACE WHERE SCENTS AND
MEMORIES COME TOGETHER.





Silver Stud Earrings



Triple Stars



Moon/Star



2 Strike Lightning



Flat Paws



Open Cat



Dragonfly



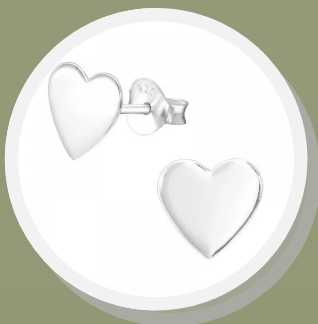
Starfish



Bee



Open Heart



Flat Heart



White Pearl



Crystal



Silver Stud Earrings



Feather



Angel Wings



Butterflies Shooting



3D Stars



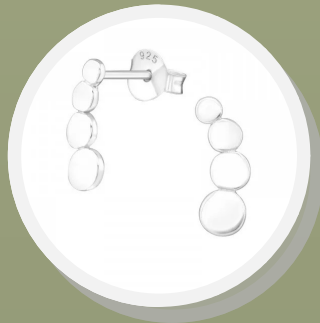
Leaf



Chain Links



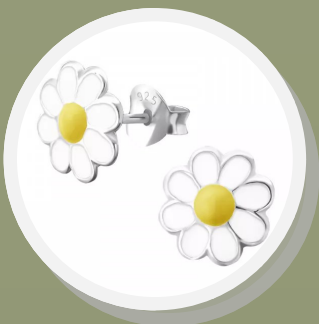
Duo Open Stars



Raindrop



Rainbow Daisy



Colour Daisy



Jigsaw



Open Star



Silver Stud Earrings



Sheep White



Sitting Cat



Horseshoe



72 Bottle Display



Gold Stud Earrings



Feather



Diamond



Square Crystal



Dragonfly



Angel Wing



Paws



Northern Star



Open Heart



Triple Star



Bee



Sunflower



Chain Links



Gold Stud Earrings



Hummingbird



Cross



Flat Heart Studs



Moon & Star



2 Strike Lightning





Mini Hoop Silver Earrings



Starfish



Star & Moon



Pearl White



Feather



Dragonfly



Tree of Life



Flat Star



Turquoise



Solid Heart



Mini Hoop Gold Earrings



White Pearl Mini Hoops



Open Leaf Mini Hoops



Moon & Star Mini Hoops



Solid Heart Mini Hoops



Crystal Mini Hoops



Feather Mini Hoops



Open Star Mini Hoops



STERLING SILVER EARRINGS

- NON TARNISH IN BOTTLE
- STRONG REPEAT SALES
- PERFECT GIFT IDEA
- HIGH IMPULSE
- EXPERIENTIAL
- EASY MAINTENANCE

MATERIAL

All earrings are made from Sterling Silver, Gold plated earrings, have Sterling Silver as a base metal

OTHER INFO

Choice of 2 stands, regular 72 bottle or smaller 42 bottle CDU. 72 bottle stand is recommended as it has a greater range and is better for high volume locations.

Comes with a choice of card backs, typically Black or Kraft, with Kraft being preferred by most due to ability to print on them.

COST PRICING PER STAND

(RRP)

72 bottles	£540	(£1,440)
42 bottles	£315	(£784)

REORDER COST PRICING

Silver earrings	£7.50	(£20)
Gold plated	£8	(£22)

MELTING POTS

WAX MELTS IN A JAR

- ❁ **VISUALLY ATTRACTIVE**
Eye-catching design with strong shelf appeal.
- ❁ **CUSTOMISABLE**
Adjust number of hearts for different strengths.
- ❁ **PERFECT GIFT IDEA**
Attractive for all gifting occasions at a good price point.
- ❁ **POINT OF DIFFERENCE**
Unique product not produced by anyone else.
- ❁ **EXPERIENTIAL**
Using the spoon makes for an interactive experience.
- ❁ **GREAT VALUE**
Lasts up to 300 hours.

COST £5
RRP £12



MIX & MATCH WAX MELTS

❁ **VISUALLY ATTRACTIVE**
Eye-catching designs with vibrant botanicals.

❁ **VEGAN FRIENDLY**
Made from a highly sustainable coconut wax blend.

❁ **PERFECT GIFT IDEA**
Attractive for all gifting occasions at a good price point.

❁ **REPEAT VISITS**
Different selections can be made each time, encouraging repeat sales.

❁ **EXPERIENTIAL**
Choosing wax melt fragrances typically recalls strong memories, inspiring sales.

❁ **GREAT VALUE**
Each melt lasts up to 20 hours.





	COST PRICING	(RRP)
WAX MELTS BOX 90	£44	(£12.50*)
BOXES (1 PER 10 WAX MELTS)	FOC	
POINT OF SALE	FOC	
*10 wax melts in box		
EXAMPLE PACKAGE	£528	(£1,350)
Including: Mix & Match Wax, Melts box 90 x 12, Boxes x 108, Point of Sale		
(All prices exc VAT)		



DIFFUSERS

- 🌸 **VISUALLY ATTRACTIVE**
Eye-catching designs with vibrant packaging and colours
- 🌸 **REPEAT VISITS**
A large range of different scents and looks encourages variety
- 🌸 **PERFECT GIFT IDEA**
Attractive for all gifting occasions at a good price point, especially when coupled with our parts of the range to make a set.
- 🌸 **VEGAN FRIENDLY**
Fragrance oils are all vegan friendly
- 🌸 **GREAT VALUE**
Each diffuser lasts up to 12 weeks

COST £9.21
RRP £22

CANDLES

🌸 VISUALLY ATTRACTIVE

Eye-catching design with strong shelf appeal.

🌸 PERFECT GIFT IDEA

Attractive for all gifting occasions at a good price point.

🌸 POINT OF DIFFERENCE

The wood effect lids create a more rustic look

🌸 GREAT VALUE

Lasts up to 35 hours.

COST £5
RRP £12

20  25
GIFT OF THE YEAR
SHORTLISTED



FRAGRANCE LIBRARY



ICONIC COLLECTION

Lemon, Lime & Ginger

Myrrh & Tonka

Sea Salt & Driftwood

Fresh Linen

Mocha Italia

Strawberries & Cream



CLASSIC COLLECTION

Madagascar Vanilla

Eucalyptus & Thyme

Spiced Honey & Sandalwood

Pear Drops

Rose & Sandalwood

Black Pepper, Vetiver & Musk



WELLBEING COLLECTION

Lavender & Chamomile

Black Pepper & Sandalwood

Glowing Honey

Ylang Ylang

Pink Grapefruit

Sicilian Orange



SIGNATURE COLLECTION

Pomegranate Rose

Armoise, Amber & Sandalwood

Cassis & Fig

Blackberry & Bay

Lime, Basil & Mandarin

Amber & Cedarwood



GARDEN COLLECTION

Hyacinth & Jasmine

Wild Juniper & Elderberry

Rhubarb & Blackberry

Cassis & Plum

Peach Blossom

English Garden



SEASONAL COLLECTION

Christmas Nights

Cinnamon, Orange & Cranberry

Gingerbread

Rhubarb & Cinnamon

Snow Drop

Pumpkin Spice

SUGGESTED RANGES

WAX MELTS

SELECTION FOR 12

Wild Juniper & Elderberry
Lemon, Lime & Ginger
Fresh Linen
Strawberries & Cream
Pomegranate Rose
Black Pepper & Sandalwood
Glowing Honey
Pink Grapefruit
Sicilian Orange
Rhubarb & Blackberry
Myrrh & Tonka
English Garden

ADD TO SELECTION ABOVE FOR 18

Pear Drops
Black Pepper, Vetiver & Musk
Blackberry & Bay
Mocha Italia
Peach Blossom
Lavender & Chamomile

ADD TO SELECTION ABOVE FOR 24

Sea Salt & Driftwood
Rose & Sandalwood
Lime, Basil & Mandarin
Spiced Honey & Sandalwood
Amber & Cedarwood
Madagascan Vanilla

EARRINGS

SELECTION FOR SMALL CDU

Stud Triple Stars	Stud Crystal
Stud Moon/star	M/H Starfish
Stud 2 strike lightning	M/H Star & Moon
Stud Flat paws	M/H Pearl white
Stud Open cat	M/H Feather
Stud Dragonfly	M/H Dragonfly
Stud Starfish	M/H Tree of life
Stud Bee	M/H Flat star
Stud Open heart	Stud Feather
Stud Flat hearts	Stud Angel wings
Stud White pearl	

ADD TO SELECTION SMALL CDU FOR REGULAR CDU

Stud Butterflies shooting	Stud Rainbow Daisy
Stud 3D stars	Stud Colour daisy
M/H Turquoise	Stud Jigsaw
Stud Leaf	Stud Open Star
Stud Chain Links	Stud Sheep white
M/H solid heart	Stud Sitting cat
Stud Duo Open Stars	Stud horseshoe
Stud Raindrop	





MIX & MATCH BEST PRACTICE

Having pick-and-mix wax melts on an open central table offers several distinct advantages for high volume locations such as garden centres in particular:

❁ EXPERIENTIAL EXPLORATION

An open table invites customers to interact directly with the products. They can smell, touch, and explore different scents more freely, which creates a more engaging and experiential shopping experience.

❁ INCREASED VISIBILITY

A central table display can draw customers' attention immediately making a focal point as they browse.

❁ SOCIAL ENGAGEMENT

An open table creates a communal atmosphere, allowing customers to share their thoughts on scents with friends or team, enhancing their overall shopping experience.

❁ SIMPLIFIED PRODUCT ACCESS

With everything on a central table, customers can easily access all the available scents without having to reach or bend down to wall shelves. This convenience can lead to longer visits and increased purchases. It also allows for multiple customers to engage at once.

❁ CROSS-PROMOTION

A central table allows for easy cross-promotion with related products, such as warmers or other parts of our range, the open space benefits from a greater sense of context and association increasing the likelihood of incremental sales.

By choosing a central table for pick-and-mix wax melts, you create a more dynamic, inviting, and engaging shopping environment that will ultimately drive customer satisfaction and sales.